



**24 snowy little buildings for you to
print, cut, and make**

For ages 6 and up



See more at
www.digitprop.com



Instructions:

Print the pages on an inkjet or laser printer (inkjet works slightly better), preferably on heavier paper or cardstock. I recommend 150-180 gsm or about 65 lb cover.

Cut out along the solid lines, crease and fold along the dotted lines. Creasing can be done with a pointy object such as the back of a knife or scissors and a ruler for guidance.

Assemble the buildings by gluing the flaps in the numbered order, to the opposite faces with the matching number.

Close the bottom of the houses last, after everything else is in place, so that you can apply pressure from the inside where necessary.

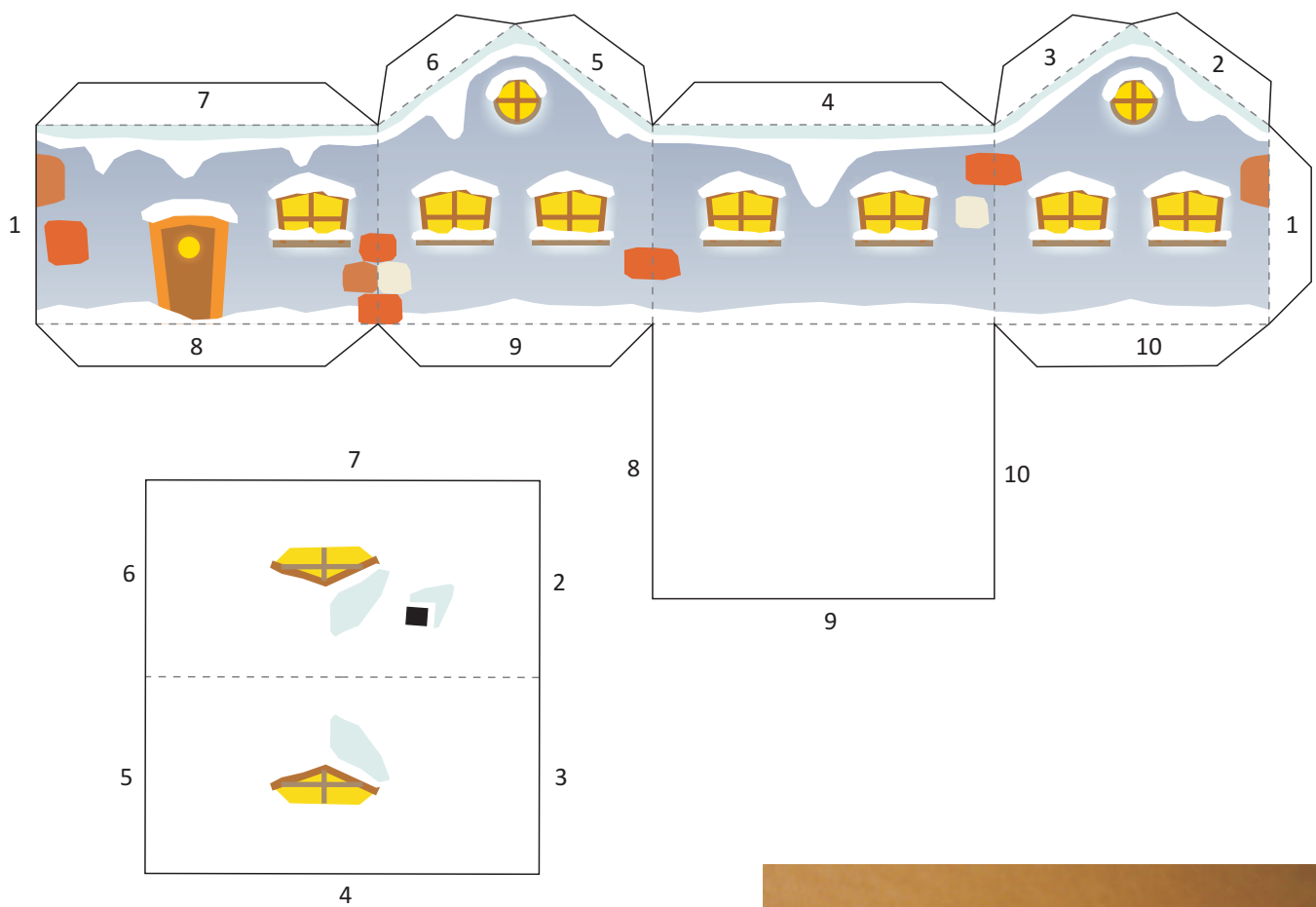
The bottom is actually not absolutely necessary, but adds some stability to the houses - if you want to simplify the building process, cut the models out without the bottom.



See more at www.digitprop.com

Winter village advent calendar Project #128

No. 1 - Family house

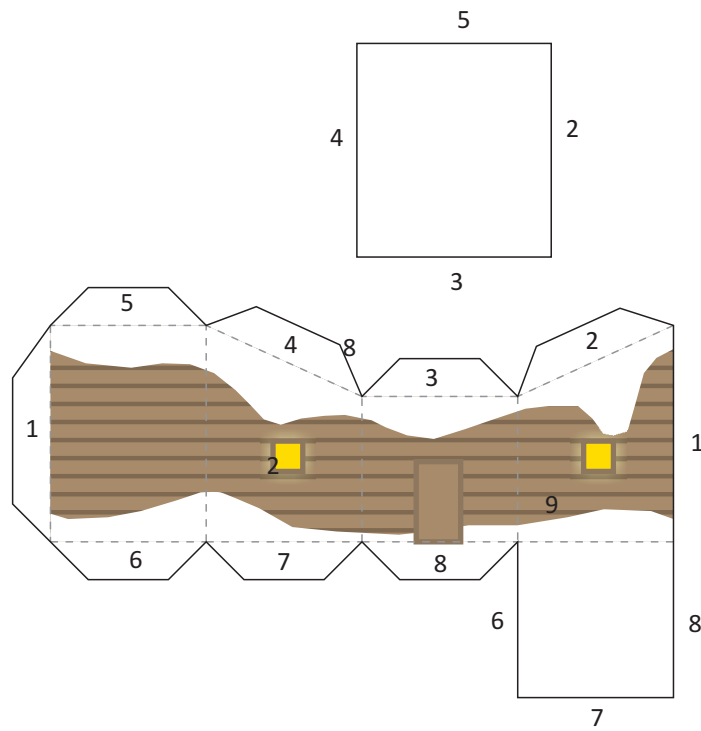




See more at www.digitprop.com

Winter village advent calendar Project #128

No. 2 - Shed

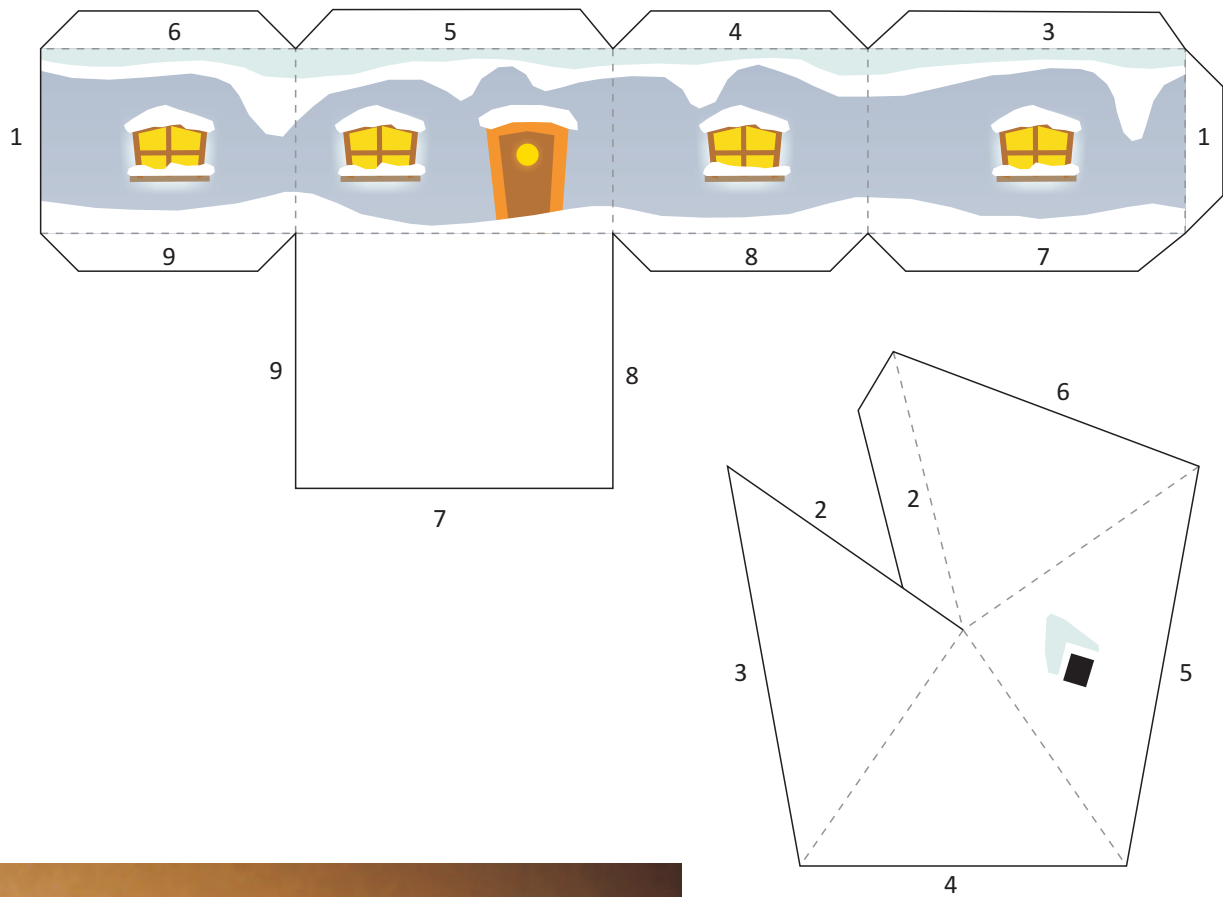




See more at www.digitprop.com

Winter village advent calendar Project #128

No. 3 - Small house

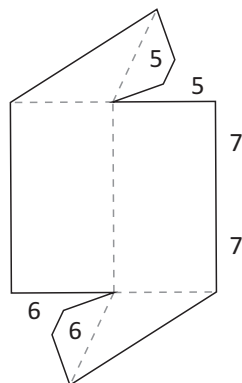
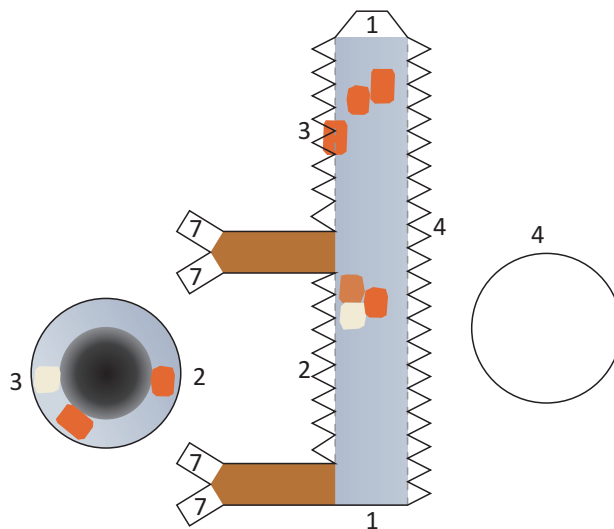




See more at www.digitprop.com

Winter village advent calendar Project #128

No. 4 - Well

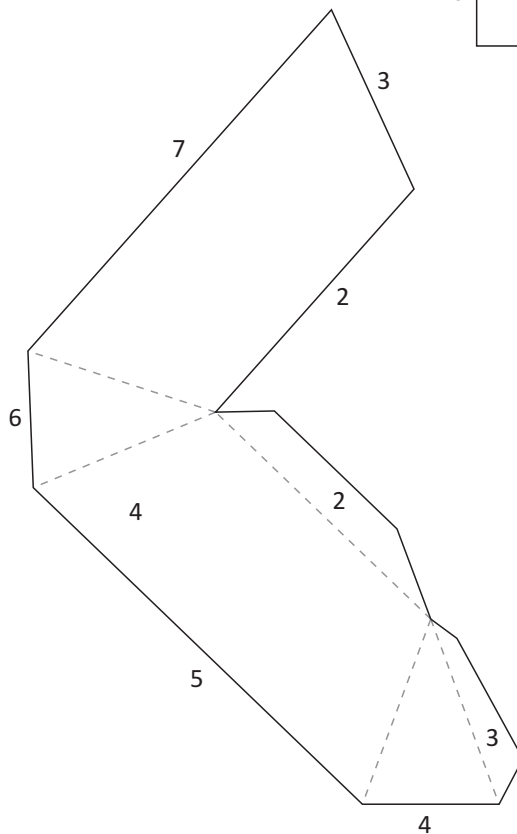
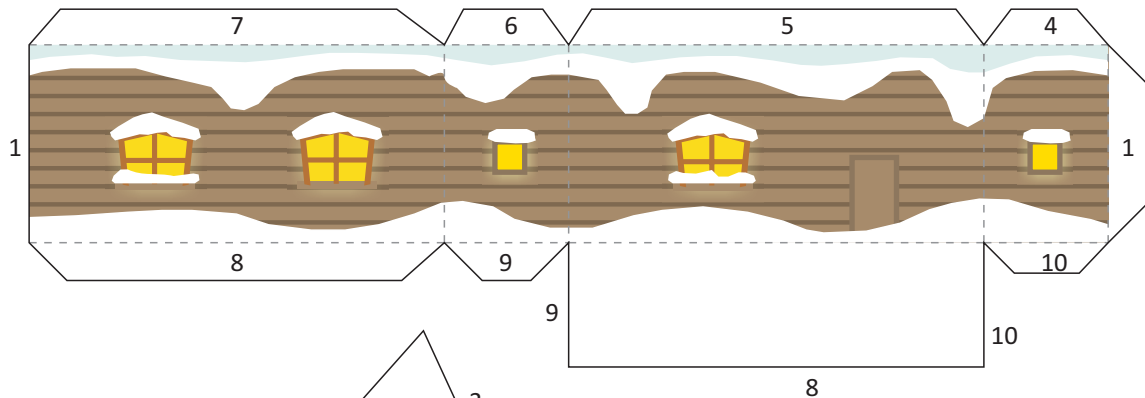




See more at www.digitprop.com

Winter village advent calendar Project #128

No. 5 -Narrow wooden house



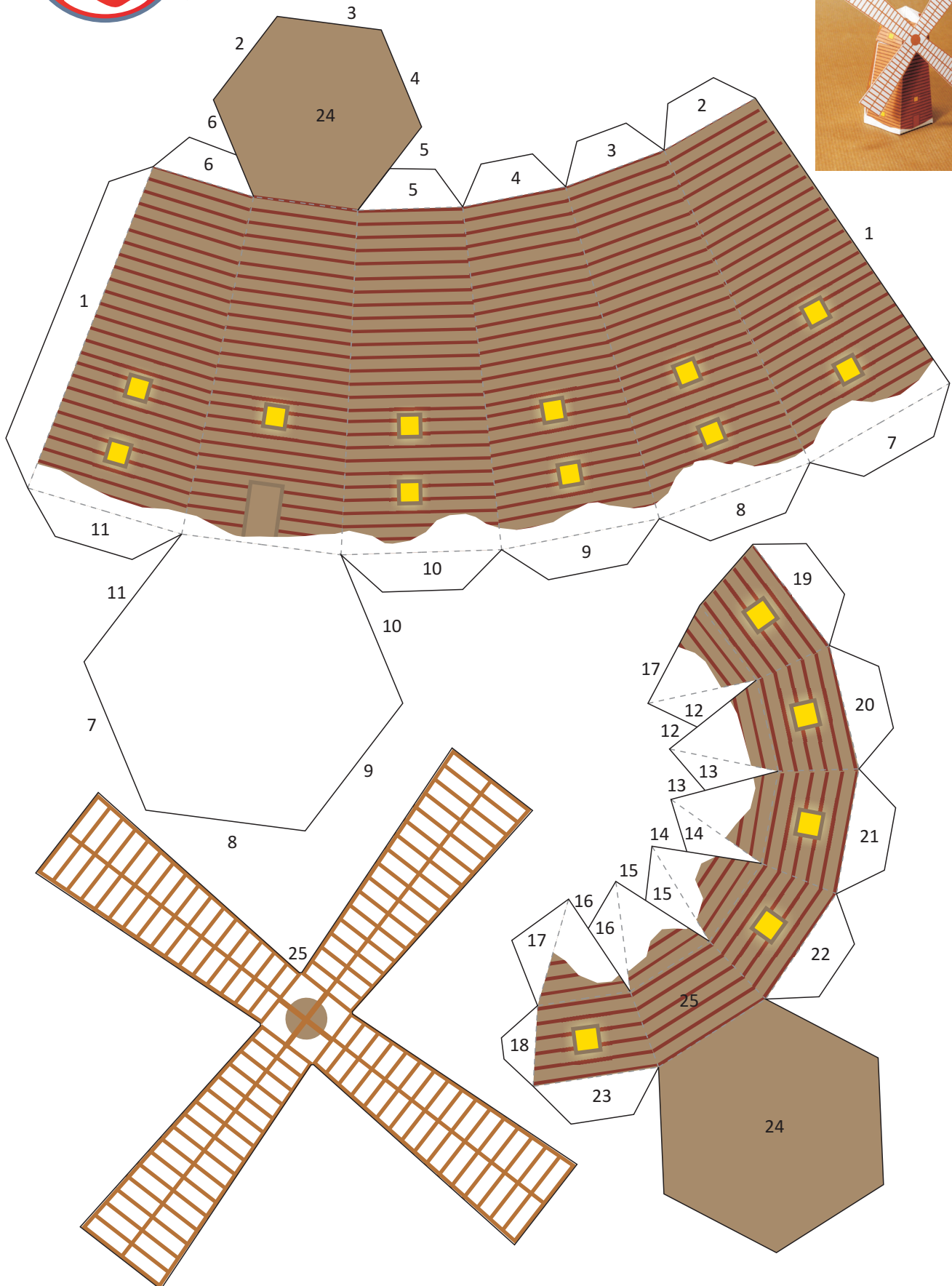
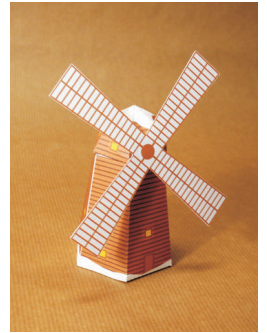


Winter village advent calendar Project #128

No. 6 - Wind mill



See more at www.digitprop.com

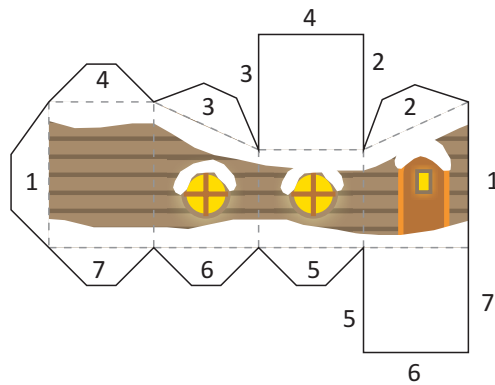




See more at www.digitprop.com

Winter village advent calendar Project #128

No. 7 - Tiny shed (to be attached to a house)

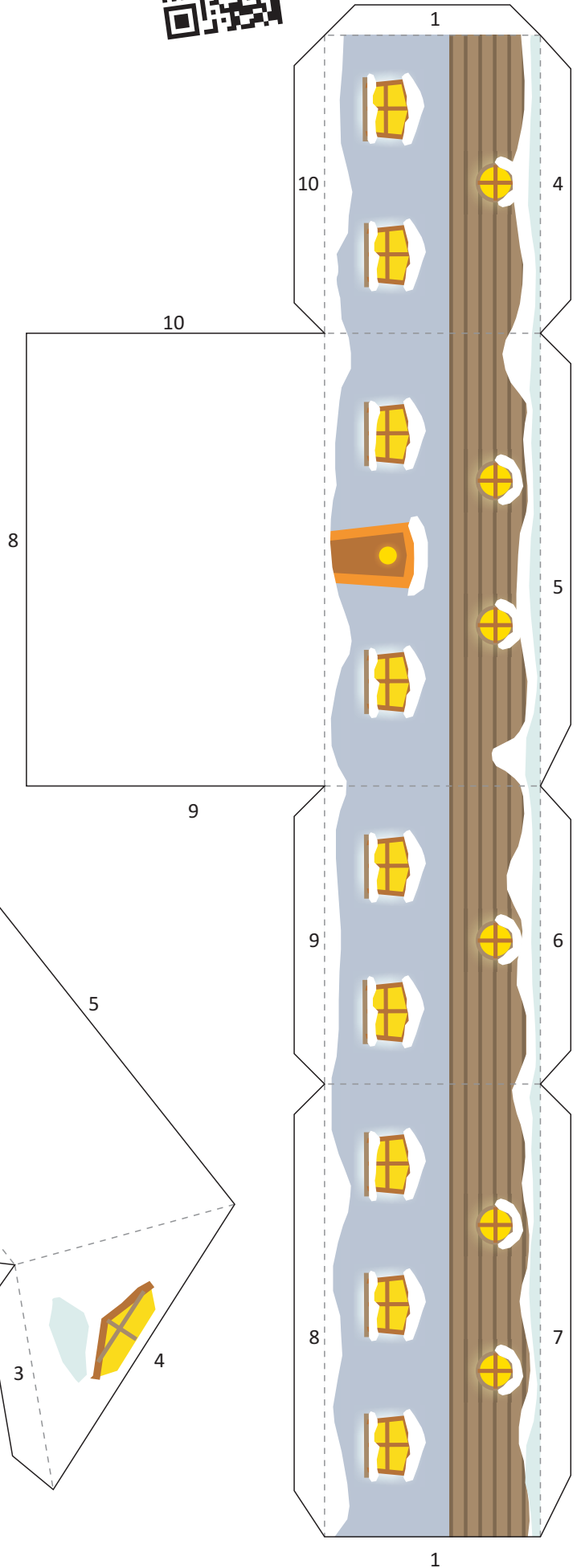
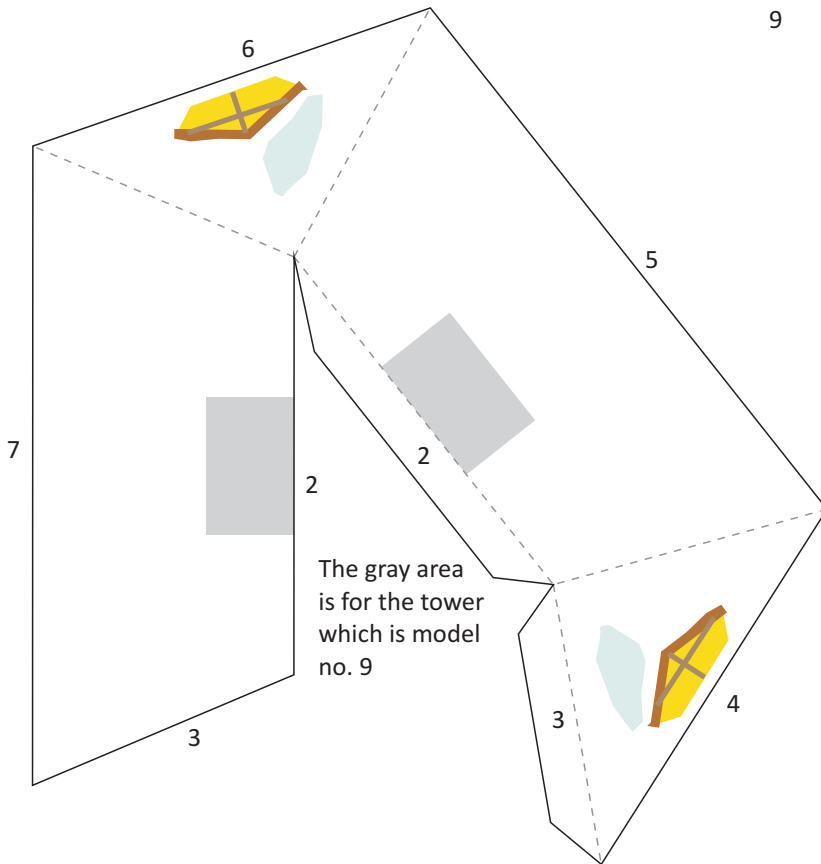




See more at www.digitprop.com

Winter village advent calendar Project #128

No. 8 - Tower house (tower is model no. 9)

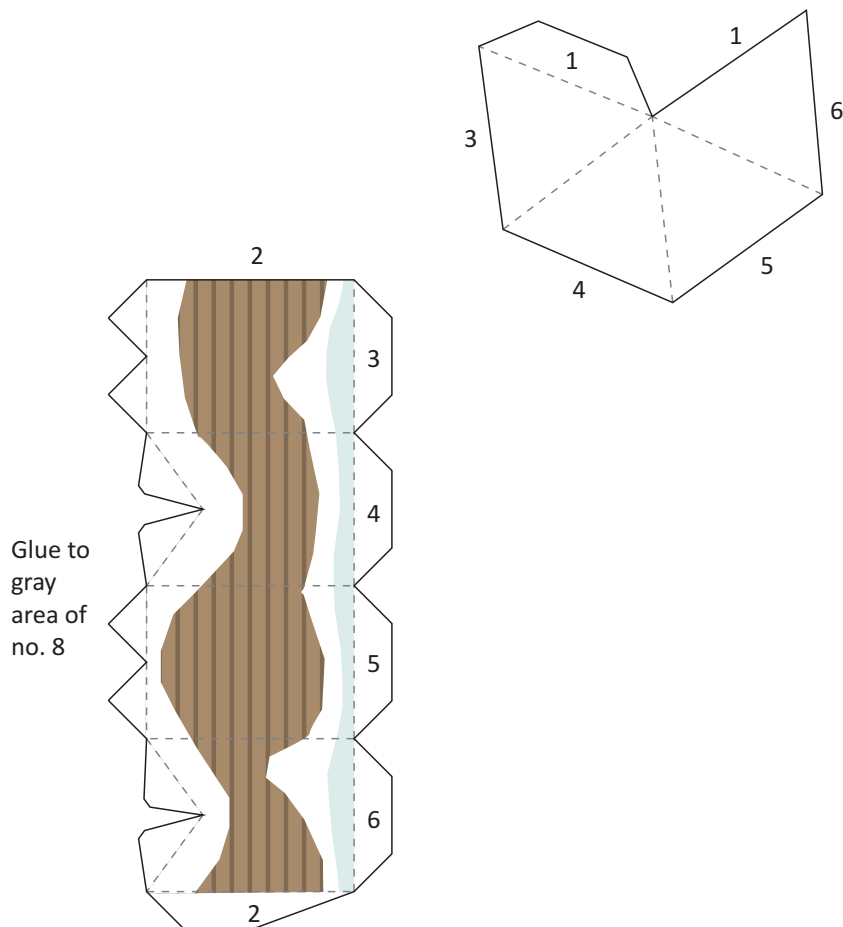




See more at
www.digitprop.com

Winter village advent calendar Project #128

No. 9 - Tower for house no. 8

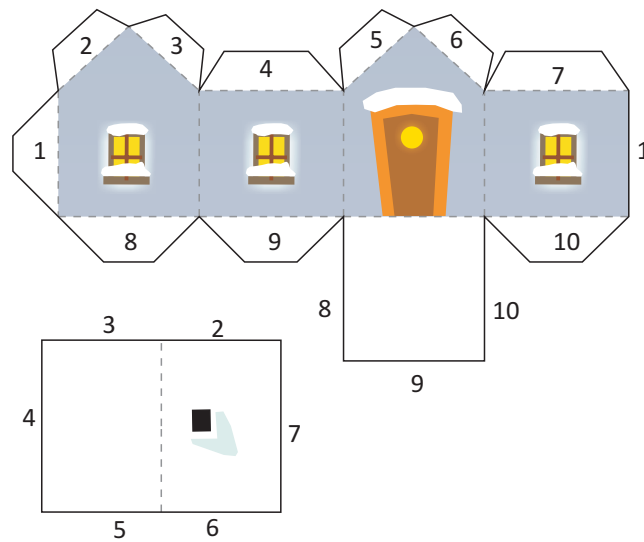




See more at
www.digitprop.com

Winter village advent calendar Project #128

No. 10 - Tiny house

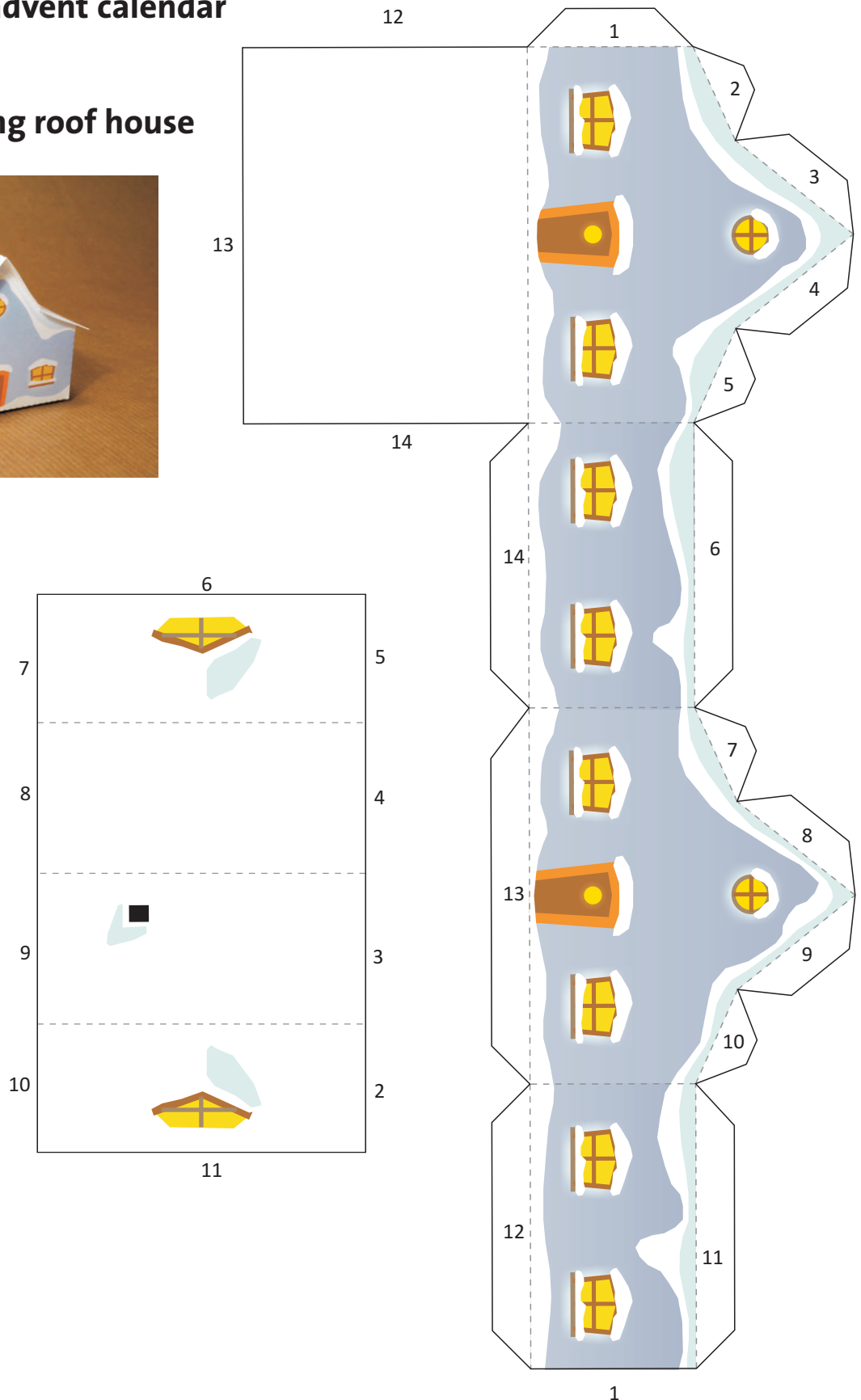




See more at www.digitprop.com

Winter village advent calendar Project #128

No. 11 - Gullwing roof house

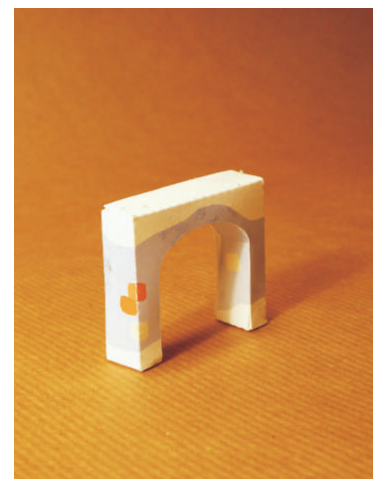
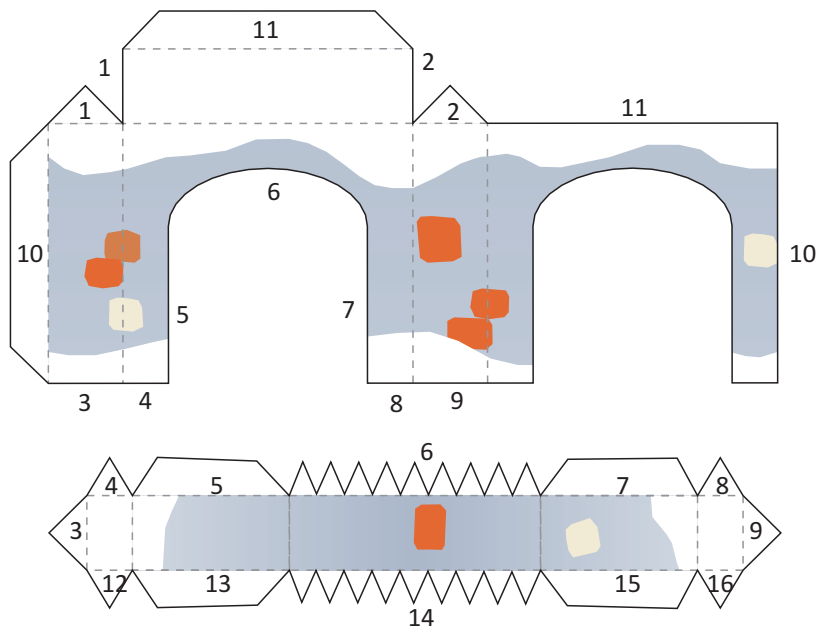




See more at www.digitprop.com

Winter village advent calendar Project #128

No. 12 - Arch

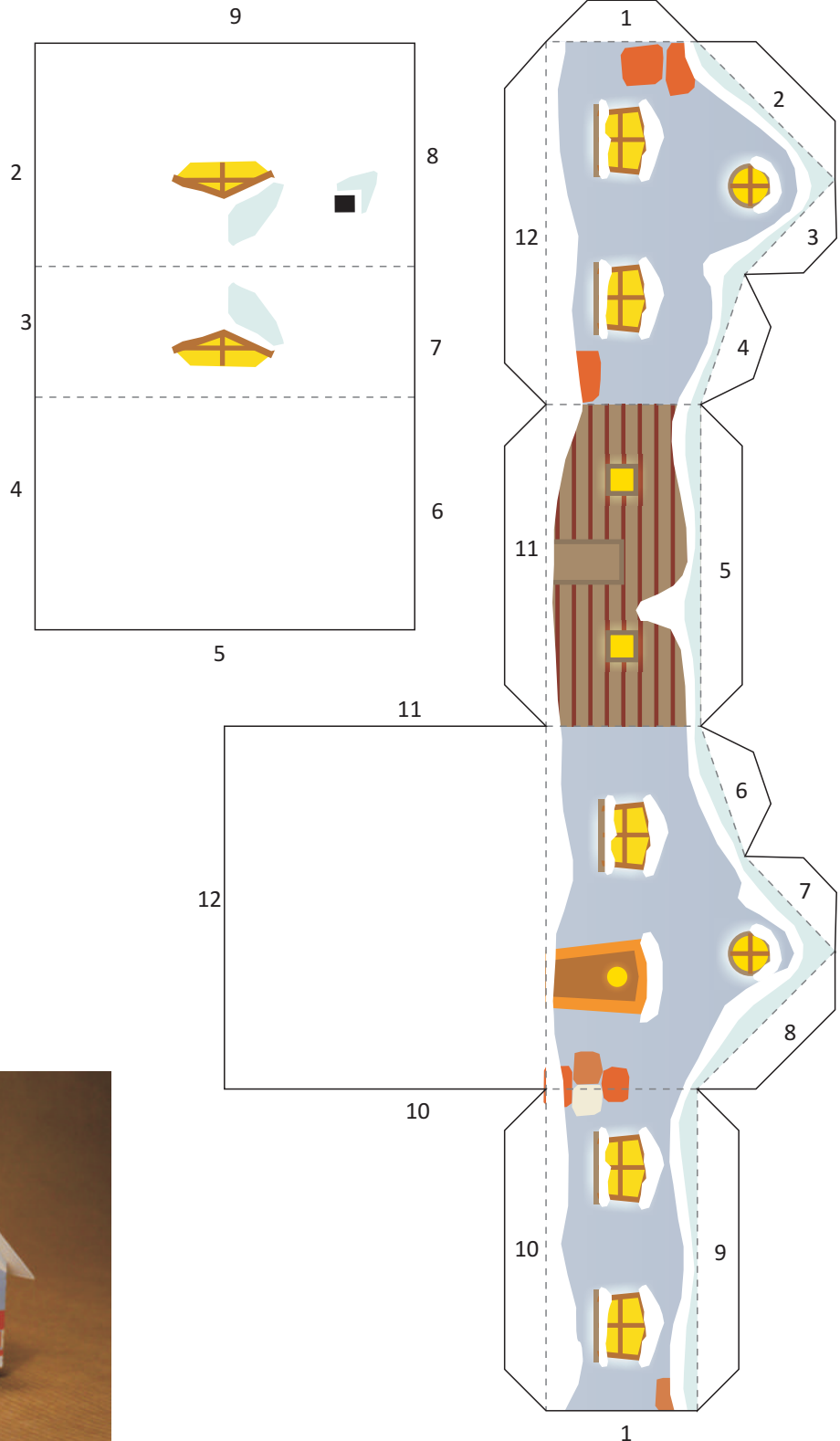




See more at www.digitprop.com

Winter village advent calendar Project #128

No. 13 - House with sheltering roof

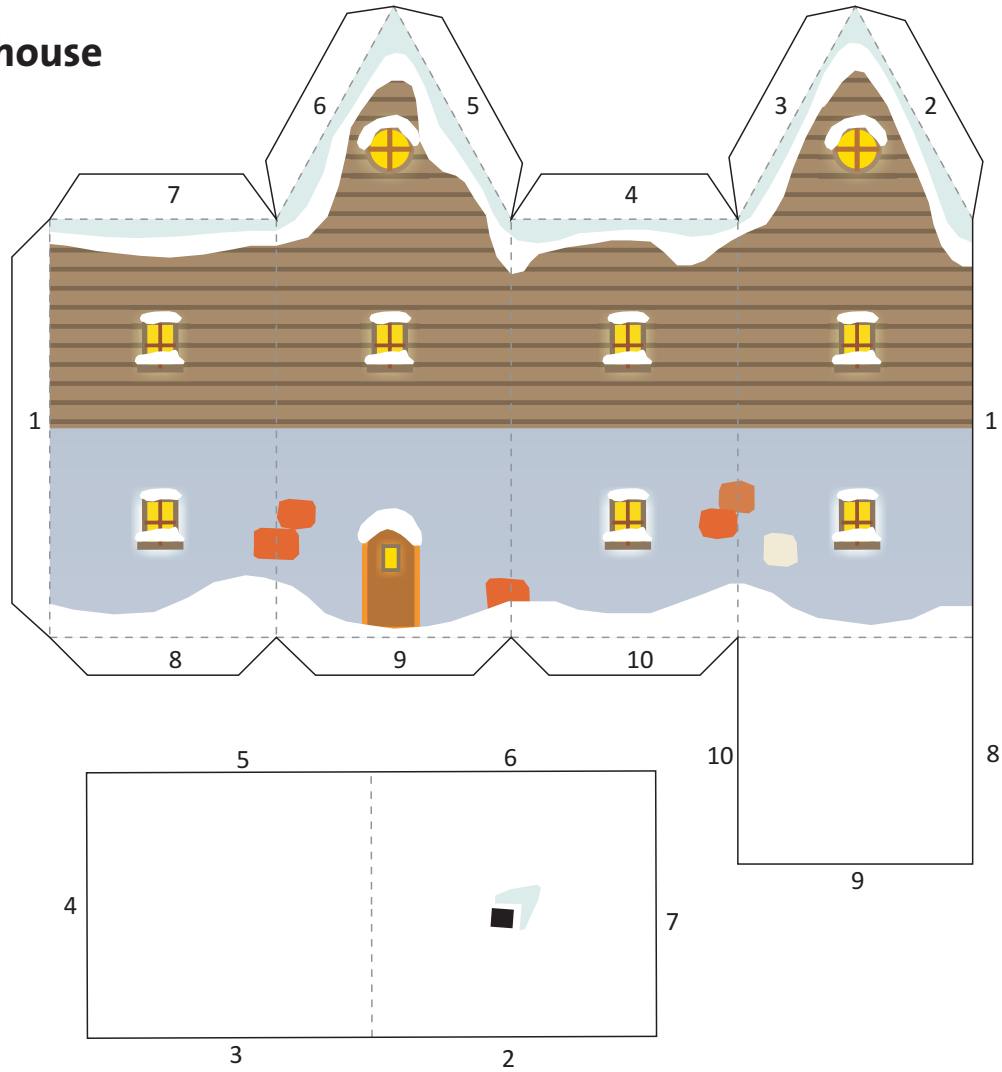




See more at www.digitprop.com

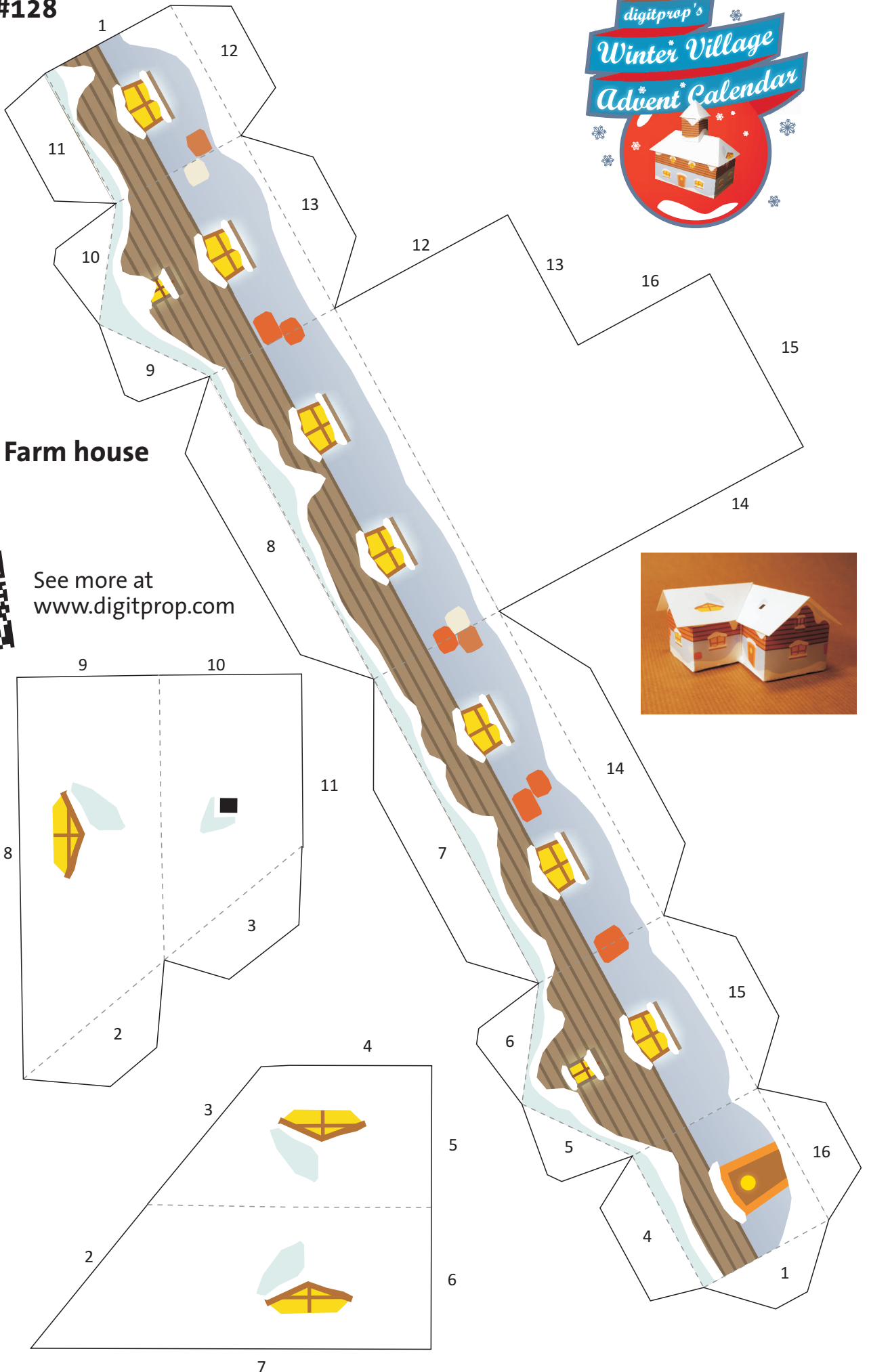
Winter village advent calendar Project #128

No. 14 - Tower house



Winter village advent calendar

Project #128



No. 15 - Farm house



See more at www.digitprop.com

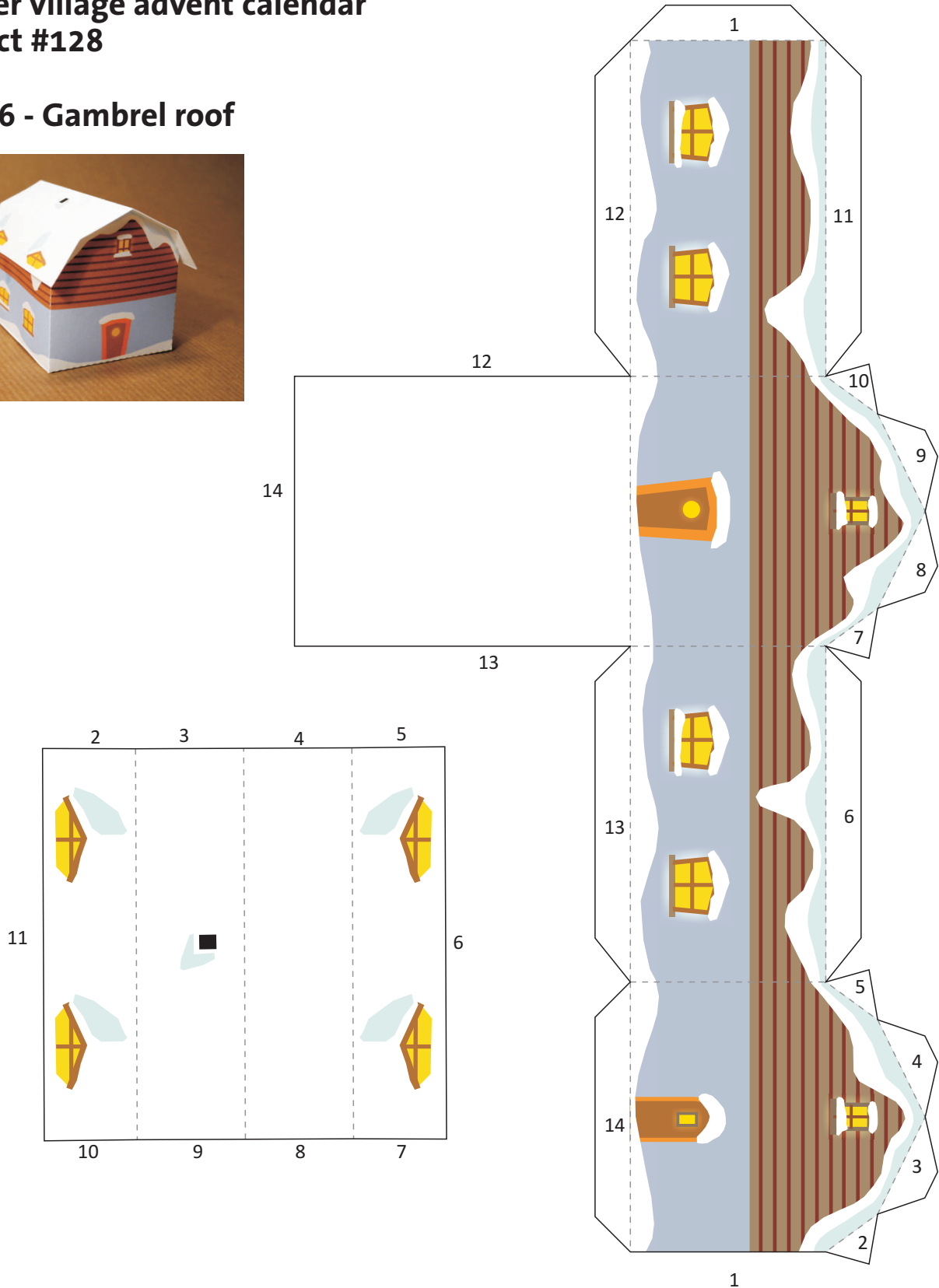




See more at
www.digitprop.com

Winter village advent calendar Project #128

No. 16 - Gambrel roof



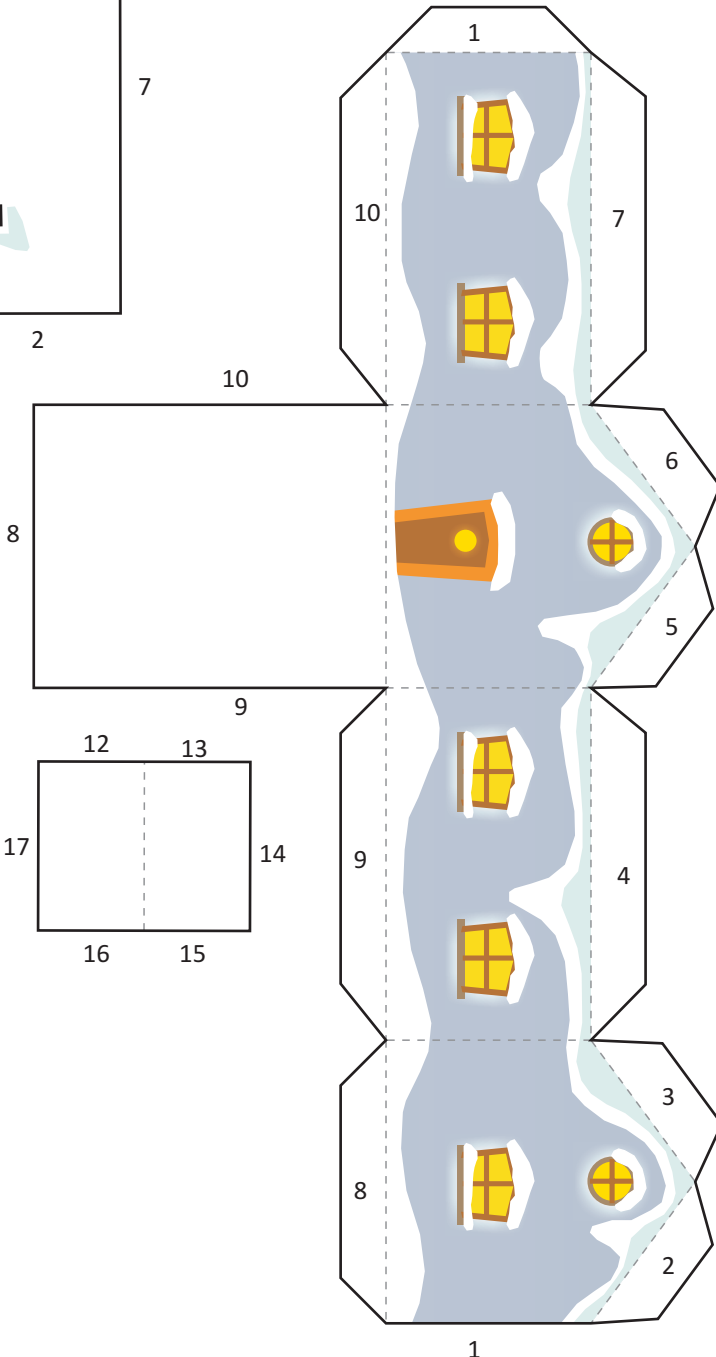
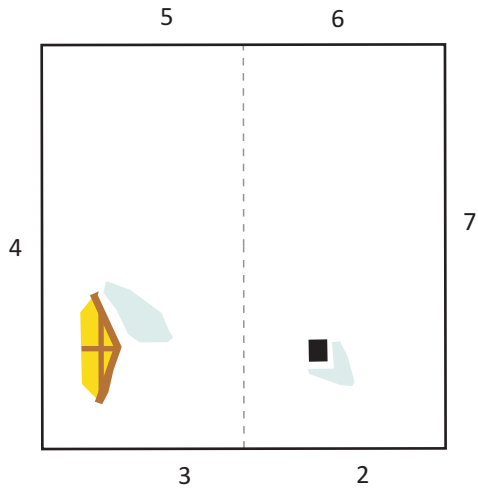


See more at www.digitprop.com

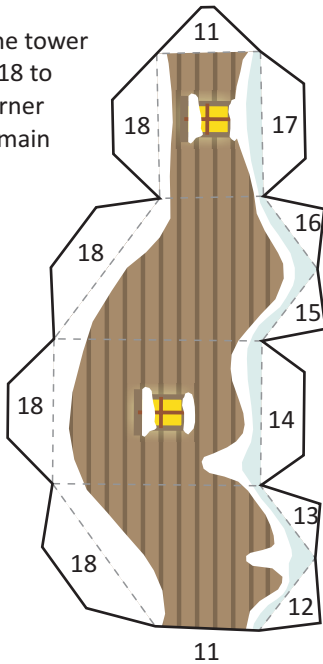


Winter village advent calendar Project #128

No. 17 - House with a corner tower



Glue the tower flaps #18 to one corner of the main roof

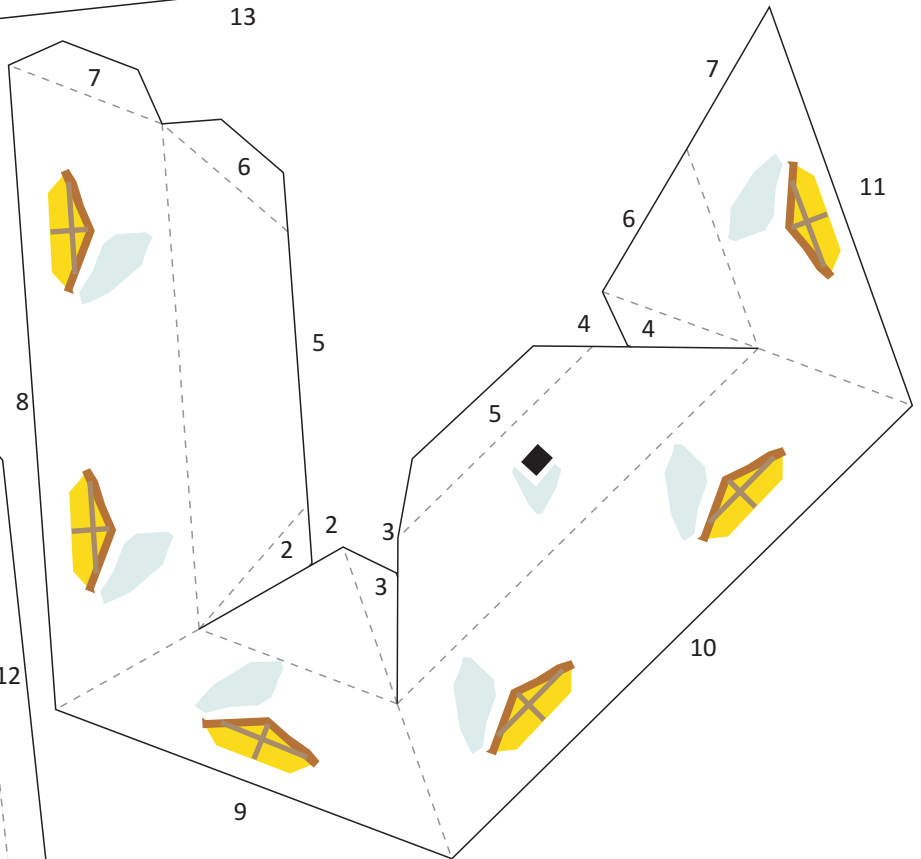
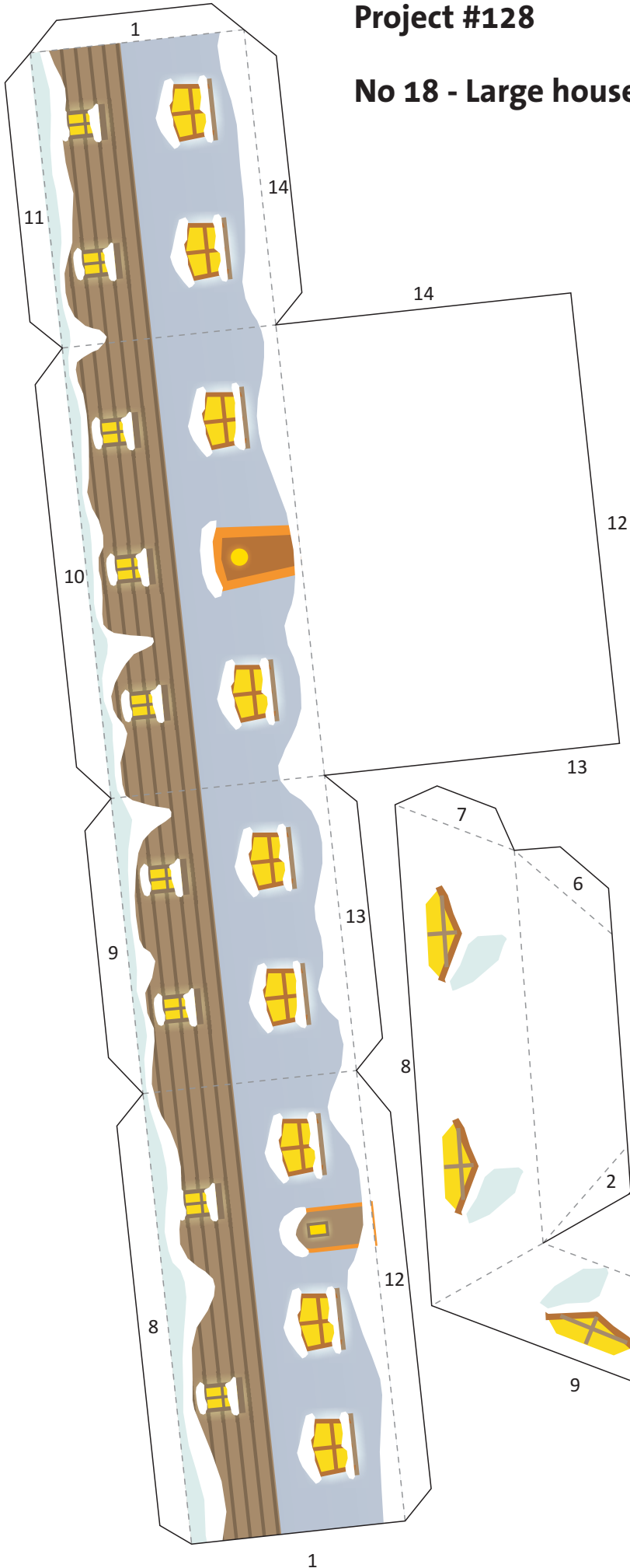


Winter village advent calendar Project #128

No 18 - Large house



See more at
www.digitprop.com

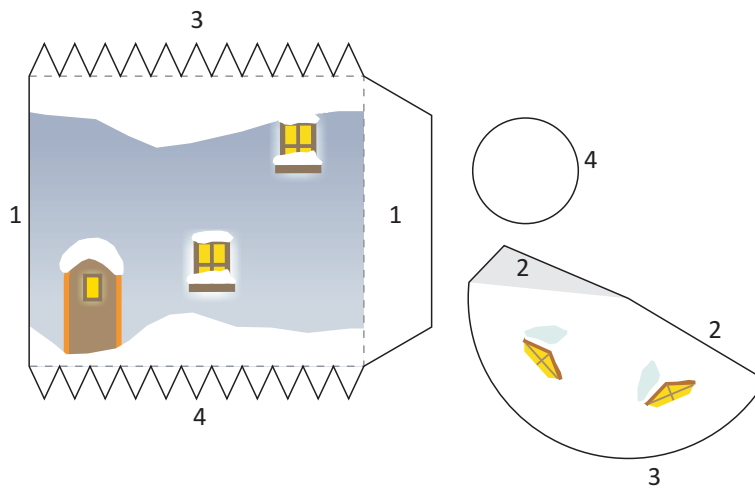




See more at www.digitprop.com

Winter village advent calendar Project #128

No. 19 - Tower

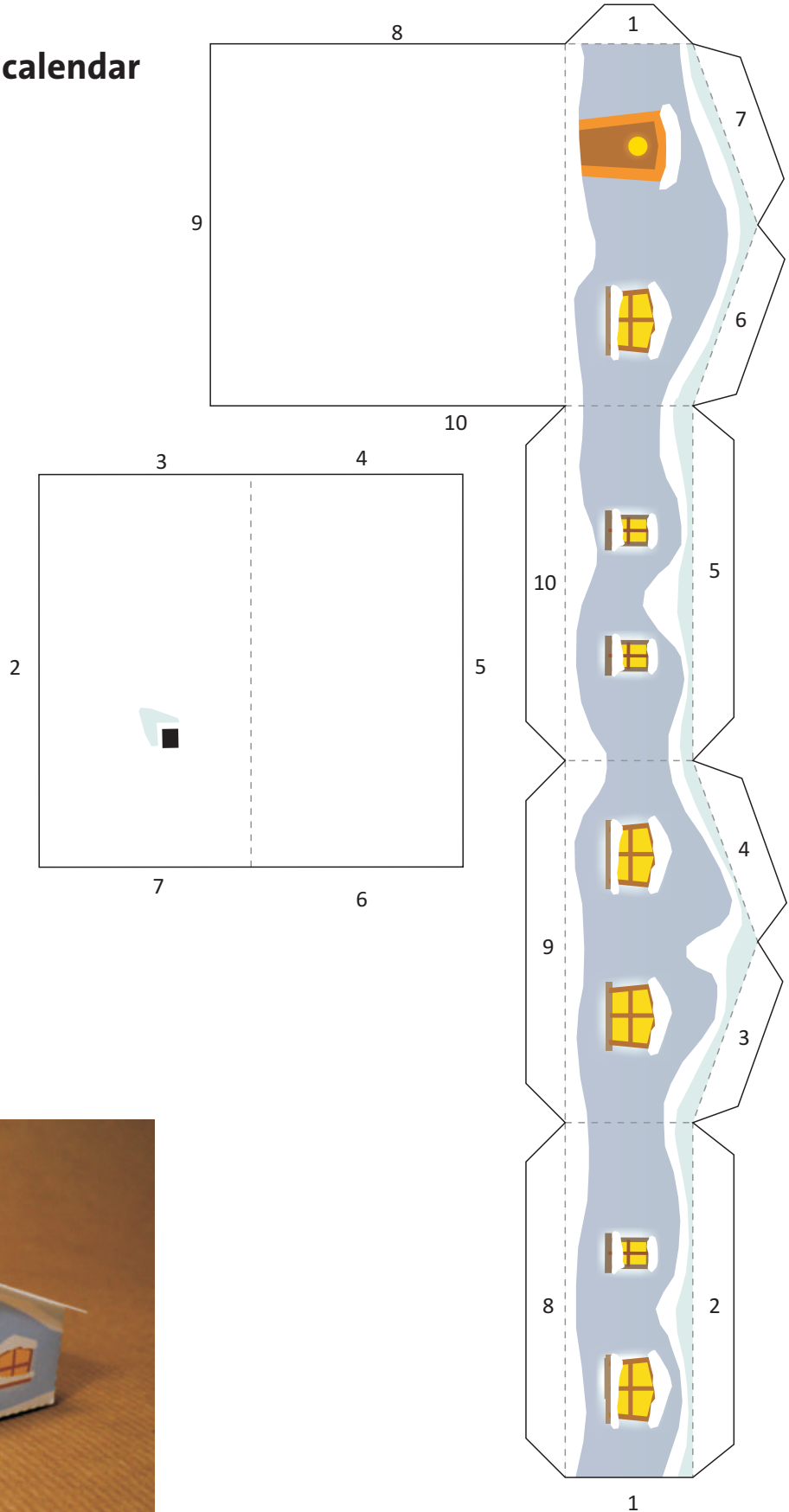




See more at www.digitprop.com

Winter village advent calendar Project #128

No. 20 - Bungalow

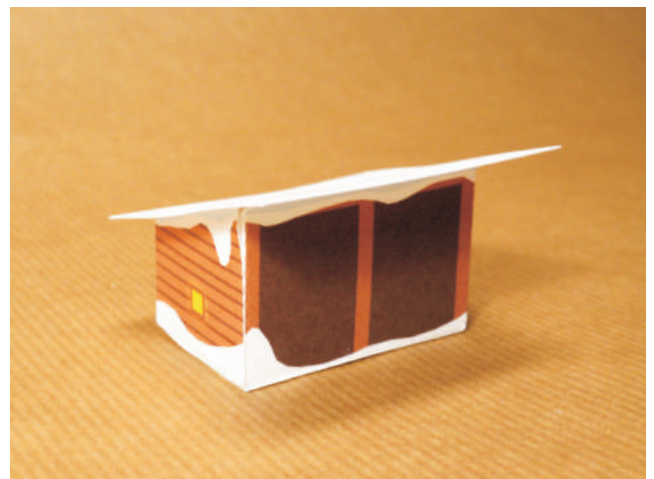
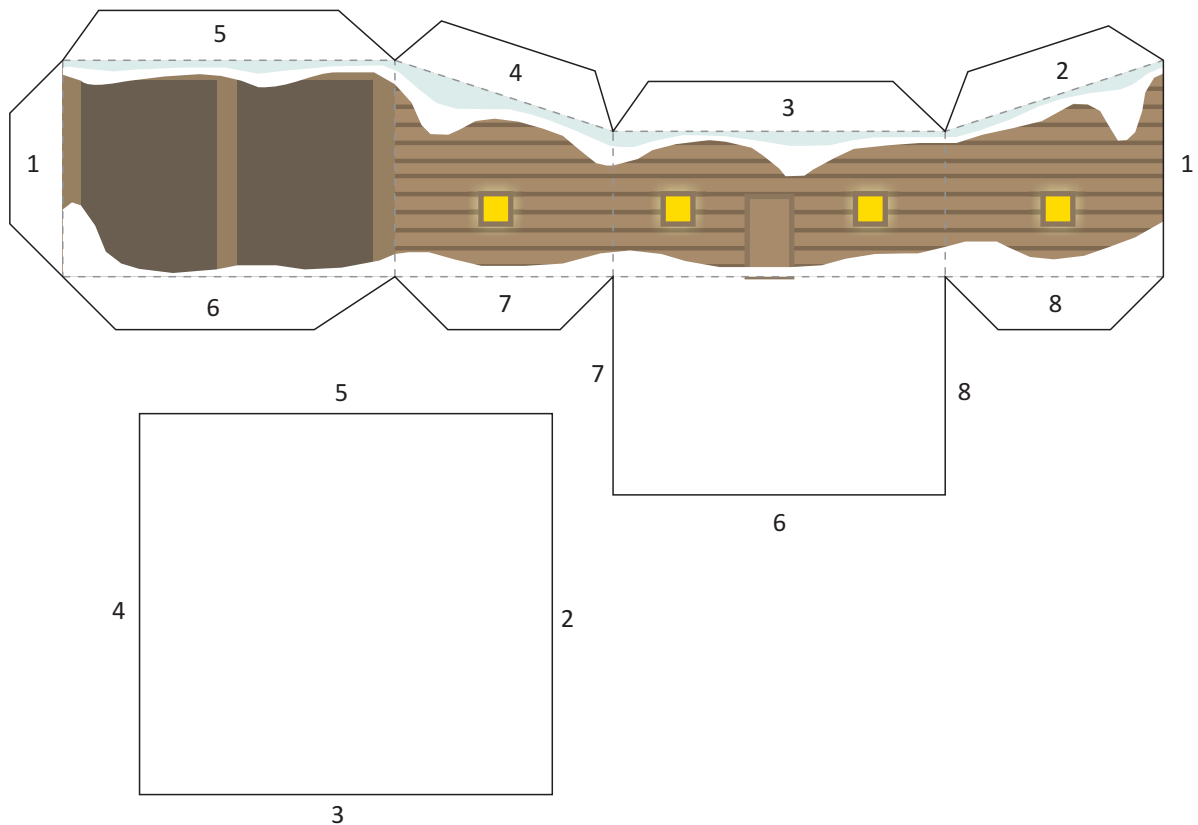




See more at
www.digitprop.com

Winter village advent calendar Project #128

No. 21 - Little stable

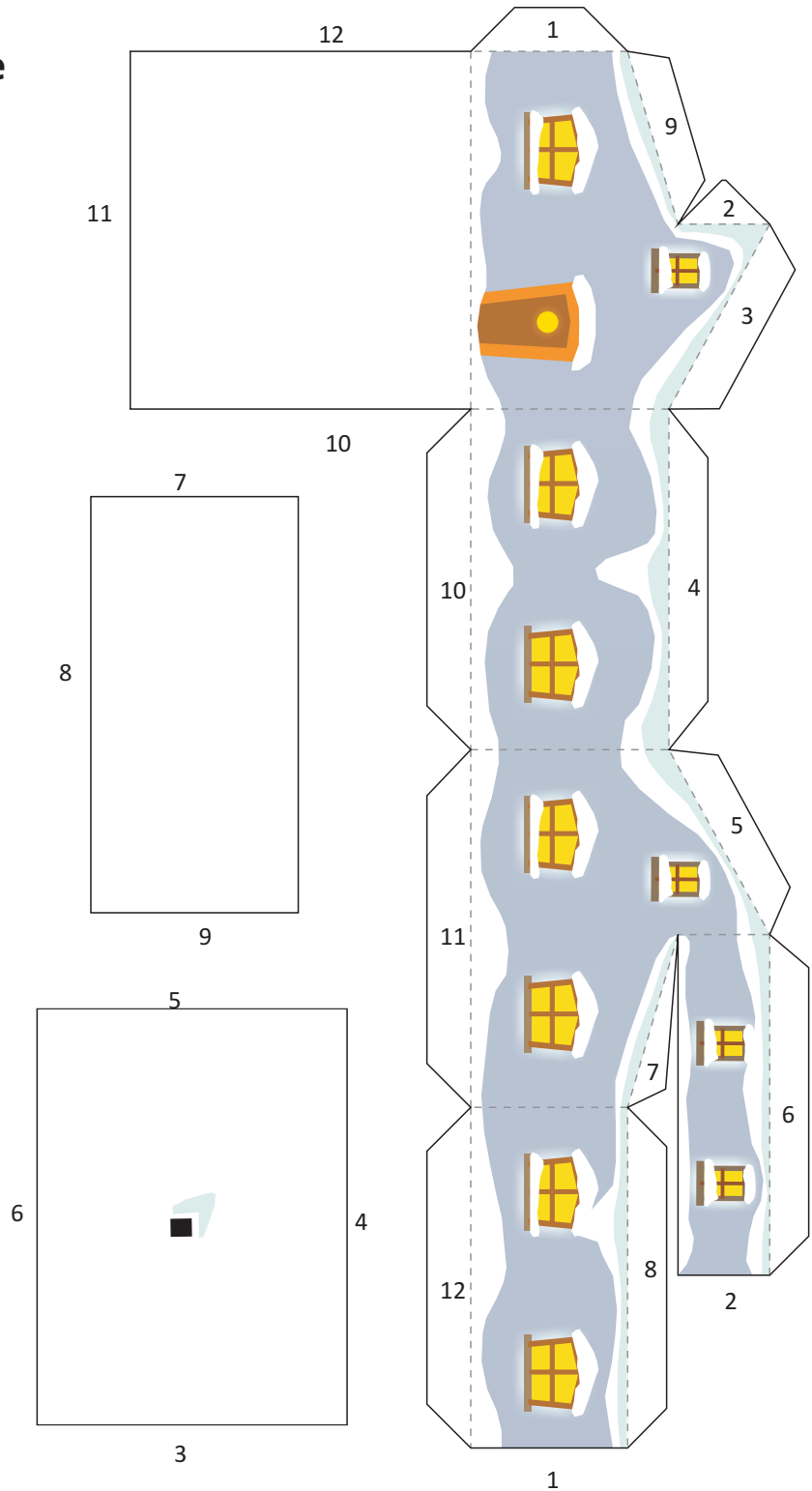




See more at www.digitprop.com

Winter village advent calendar Project #128

No. 22 - Two-story house





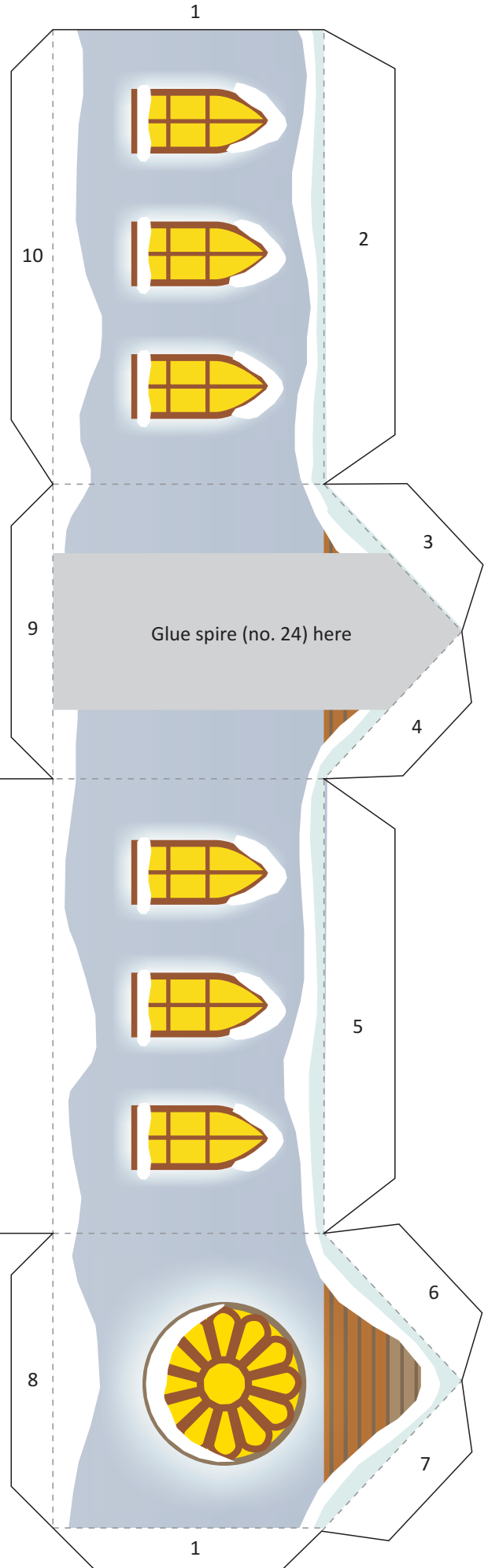
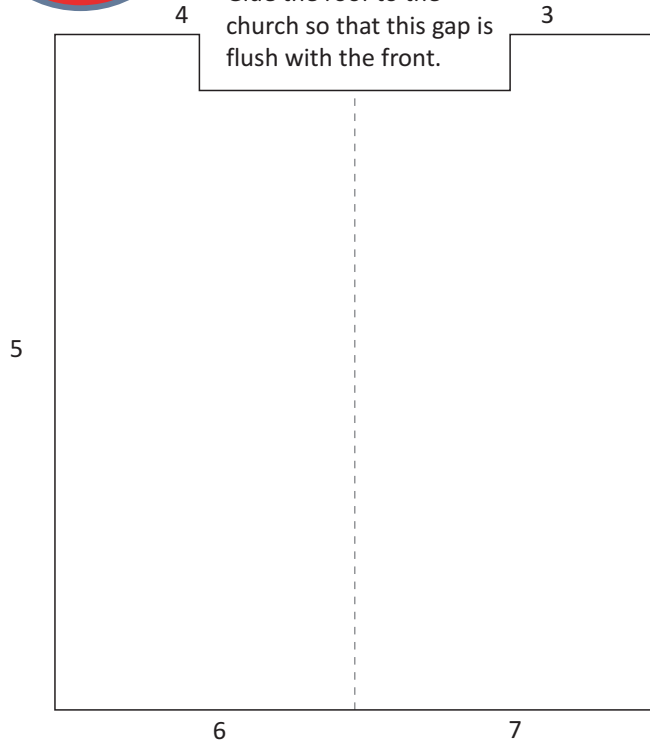
Winter village advent calendar Project #128



See more at
www.digitprop.com

No. 23 - Church

This gap is for the spire.
Glue the roof to the church
so that this gap is
flush with the front.





See more at www.digitprop.com

Winter village advent calendar Project #128

No. 24 - Church spire

